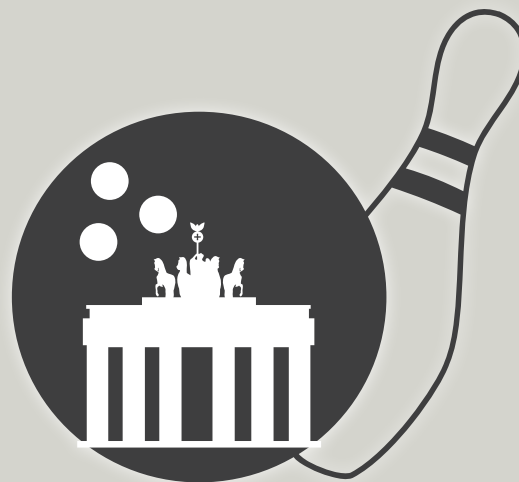


EUROPEAN —
SENIORS —
BOWLING 2021
CHAMPIONSHIPS



INVITATION

ALL INFORMATION IN THIS INVITATION BOOKLET IS PRELIMINARY AND
SUBJECT TO CHANGE AT THE DISCRETION OF THE ORGANIZING COMMITTEE
IN CONJUNCTION WITH THE ESBC PRESIDUM.

GREETINGS

DEAR FRIENDS,

IT IS A TREMENDOUS PLEASURE FOR ME AND THE ENTIRE BOARD OF DIRECTORS OF THE GERMAN BOWLING FEDERATION TO WELCOME SENIOR BOWLERS FROM ALL OVER EUROPE IN THE GERMAN CAPITAL BERLIN FOR THE EUROPEAN SENIORS BOWLING CHAMPIONSHIPS.

THE GERMAN BOWLING FEDERATION WELCOMES THE DECISION OF ESBC TO POSTPONE THE CONDUCTION OF THE CHAMPIONSHIPS 2020 IN BERLIN, WHICH FELL VICTIM TO THE PANDEMIC BY VIRUS COVID 19, TO 2021.

NOW ONLY 8 YEARS AFTER HAVING HOSTED THIS OUTSTANDING EVENT IN MUNICH, WE LOOK FORWARD TO IT AGAIN. THE ESBC IS ONE OF THE LARGEST EVENTS IN THE SPORT OF BOWLING WITH HOPEFULLY AGAIN MORE THAN 1,000 SENIOR BOWLERS PARTICIPATING.

TOGETHER WITH THE BERLIN BOWLING FEDERATION, WE WILL DO EVERYTHING POSSIBLE TO ENSURE THAT THE PARTICIPANTS BOWLING AT SCHILLERPARK, HASENHEIDE AND BOWLING WORLD WILL FEEL AT HOME AND ENJOY A FAIR COMPETITION. WE LOOK VERY MUCH FORWARD TO SEEING THE BEST FEMALE AND MALE SENIOR BOWLERS FROM ACROSS EUROPE.

WITH THIS IN MIND, WE WISH EVERYONE CHALLENGING AND EXCITING COMPETITIONS, SO THAT YOU WILL HAVE FOND MEMORIES OF YOUR VISIT TO BERLIN WITH ITS VARIETY OF ATTRACTIONS.

I WISH ALL ATHLETES, OFFICIALS AND GUESTS A PLEASANT STAY.

YOURS IN SPORT

DIETER RECHENBERG
PRESIDENT OF THE GERMAN BOWLING FEDERATION



SCHEDULE

	SCHILLERPARK MEN DOUBLES MEN TRIOS	HASENHEIDE MEN SINGLES	BOWLING WORLD WOMEN SINGLES, DOUBLES, TRIOS
SAT 19.06.2021	ARRIVALS		
10:00 - 18:00	PRACTICE	PRACTICE	PRACTICE
SUN 20.06.2021	ARRIVALS		
10:00 - 16:00	PRACTICE	PRACTICE	PRACTICE
15:00			CAPTAINS MEETING
18:00	OPENING @ ALEXANDERPLATZ AREA		
MON 21.06.2021			
09:00 - 11:45	42 DOUBLES	48 SINGLES	56 SINGLES
12:45 - 15:30		48 SINGLES	56 SINGLES
12:45 - 16:45	42 TRIOS		
16:00			ESBC MEETING
16:30 - 19:15		48 SINGLES	56 SINGLES
17:45 - 21:45	42 TRIOS		
20:15 - 23:00		48 SINGLES	56 SINGLES
TUE 22.06.2021			
09:00 - 11:45	42 DOUBLES	48 SINGLES	56 SINGLES
12:45 - 15:30	42 DOUBLES	48 SINGLES	56 SINGLES
16:30 - 19:15		48 SINGLES	
16:30 - 20:30	42 TRIOS		28 TRIOS

SCHEDULE

SCHILLERPARK
MEN DOUBLES
MEN TRIOS

HASENHEIDE
MEN SINGLES

BOWLING WORLD
WOMEN SINGLES,
DOUBLES, TRIOS

WED 23.06.2021

09:00 - 11:45
12:45 - 15:30
16:30 - 19:15
16:30 - 20:30

42 DOUBLES
42 DOUBLES
42 TRIOS

48 SINGLES
48 SINGLES
48 SINGLES

28 DOUBLES
28 DOUBLES
28 TRIOS

THU 24.06.2021

09:00 - 11:45
12:45 - 15:30
16:30 - 19:15
16:30 - 20:30

42 DOUBLES
42 DOUBLES
42 TRIOS

48 SINGLES
48 SINGLES
48 SINGLES

28 DOUBLES
28 DOUBLES
28 TRIOS

FRI 25.06.2021

09:00 - 11:45
12:45 - 15:30
16:30 - 19:15
16:30 - 20:30

42 DOUBLES
42 DOUBLES
42 TRIOS

48 SINGLES
48 SINGLES
48 SINGLES

28 DOUBLES
28 DOUBLES
28 TRIOS

SAT 26.06.2021

09:00

19:00

FINALS
MEDAL PRESENTATIONS
CLOSING CEREMONY
BANQUET @ HOFBRÄU WIRTSCHAUS BERLIN

SUN 27.06.2021

DEPARTURE

BOWLING CENTRES



BUS SHUTTLES WILL LINK EVERY HOTEL WITH EVERY BOWLING CENTRE.

BOWLING CENTRES

SCHILLERPARK

MEN DOUBLES, TRIOS
46 LANES

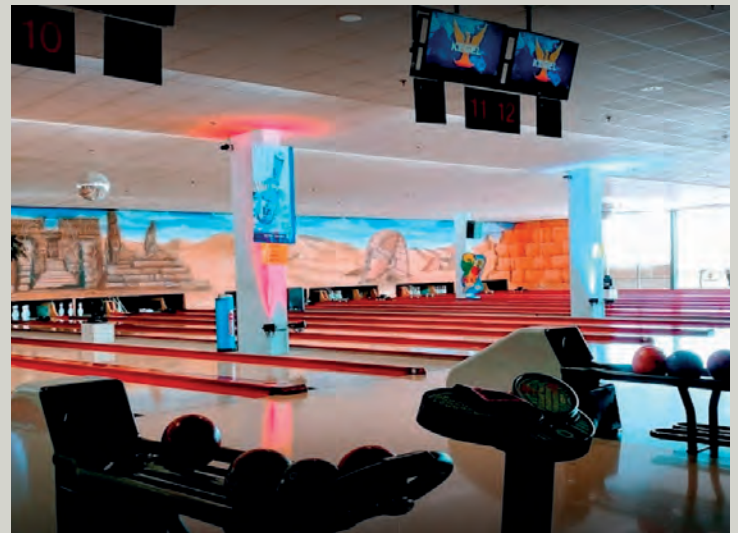
HOST OF THE WORLD YOUTH CHAMPIONSHIPS 2006

46 BRUNSWICK LANES

MÜLLERSTR. 46
13349 BERLIN

TEL. +49 30 45022977
INFO@BOWLINGCENTER-SCHILLERPARK.DE

WWW.BOWLINGCENTER-SCHILLERPARK.DE



BOWLING CENTRES

NEUE CITY BOWLING HASENHEIDE MEN SINGLES

HOST OF THE EUROPEAN WOMEN CHAMPIONSHIPS 2014

28 BRUNSWICK LANES

HASENHEIDE 108
10967 BERLIN

TEL. +49 30 6222038
OBST@BOWLING-HASENHEIDE.DE

WWW.BOWLING-HASENHEIDE.DE



BOWLING CENTRES

BOWLING WORLD

WOMEN SINGLES, DOUBLES, TRIOS

OPENED IN 2018

28 BRUNSWICK LANES

MERCEDES PLATZ
10243 BERLIN

TEL. +49 30 81825900
BERLIN@BOWLINGWORLD.DE

BERLIN.BOWLINGWORLD.DE



HOTELS



BUS SHUTTLES WILL LINK EVERY HOTEL WITH EVERY BOWLING CENTRE.

HOTELS

PARK INN BY RADISSON ****

ALEXANDERPLATZ 7, 10178 BERLIN

WWW.PARKINN-BERLIN.DE

SPECIAL ROOM RATES AVAILABLE WHEN USING
THE ESBC 2021 BOOKING FORM:

STANDARD SINGLE	113,95 €
STANDARD DOUBLE	123,95 €

CITY VIEW SINGLE	129,70 €
CITY VIEW DOUBLE	139,70 €

PANORAMA SINGLE	140,20 €
PANORAMA DOUBLE	150,20 €

JUNIOR SUITE SINGLE	166,45 €
JUNIOR SUITE DOUBLE	176,45 €

ALL ROOM RATES PER NIGHT
INCL. BREAKFAST AND INCL. BERLIN CITY TAX

ALL ROOMS WITH AIR CONDITION



HOTELS

MERCURE HOTEL BERLIN TEMPELHOF ****

HERMANNSTR. 214-216, 12049 BERLIN

WWW.MERCURE.COM/1894

SPECIAL ROOM RATES AVAILABLE WHEN
BOOKING THROUGH THE ESBC 2021 ORGANIZER:

STANDARD SINGLE	95 €
STANDARD DOUBLE	110 €

COMFORT SINGLE	105 €
COMFORT DOUBLE	120 €

DELUXE SINGLE	115 €
DELUXE DOUBLE	130 €

ALL ROOM RATES PER NIGHT
INCL. BREAKFAST AND INCL. BERLIN CITY TAX

ALL ROOMS WITH AIR CONDITION



HOTELS

HAMPTON BY HILTON

MILDRED-HARNACK-STR. 15, 10243 BERLIN

WWW.HILTON.COM/EN/HOTELS/BERMUHX-HAMPTON-BERLIN-CITY-EAST-SIDE-GALLERY/

SPECIAL ROOM RATES AVAILABLE WHEN
BOOKING THROUGH THE ESBC 2021 ORGANIZER:

SINGLE ROOM	105 €
DOUBLE / TWIN ROOM	120 €

ALL ROOM RATES PER NIGHT
INCL. BREAKFAST AND INCL. BERLIN CITY TAX

ALL ROOMS WITH AIR CONDITION



THE BANQUET

HOFBRÄU WIRTSHAUS

KARL-LIEBKNECHT-STR. 30, 10178 BERLIN



ORGANIZATION

YOUR CONTACT PERSON IN THE ESBC 2021 REGISTRATION IS FLORIAN FISTER: **INFO@ESBC2021.EU**

REGISTRATION FORMS ARE AVAILABLE AT THE OFFICIAL ESBC 2021 WEBSITE: **WWW.ESBC2021.EU**

ENTRY FEES:

THE FOLLOWING ENTRY FEES APPLY: PLAYERS 230,- € GUESTS 180,- €

HOTEL RESERVATION:

IN ORDER TO OBTAIN THE SPECIAL RATES PROVIDED FOR ALL ESBC PARTICIPANTS ...

... BOOKINGS AT THE **PARK INN BY RADISSON** SHALL BE MADE DIRECTLY WITH THE HOTEL THROUGH GROUPRESERVATIONS@PARKINN-BERLIN.COM WITH THE BOOKING CODE „BOWLING“. ROOMS WILL BE CHARGED BY THE HOTEL DIRECTLY.

... BOOKINGS AT **ALL OTHER HOTELS** SHALL BE MADE WITH THE ORGANIZING COMMITTEE ONLY THROUGH FORM B AND WILL BE CHARGED TOGETHER WITH YOUR ENTRY FEES.

PAYMENT:

PLEASE UNDERSTAND THAT ALL ENTRY FEES AND HOTEL FEES (EXCL. PARK INN) NEED TO BE PREPAID BY BANK TRANSFER ONLY. AFTER SUBMITTING YOUR ENTRY INFORMATION, YOU WILL RECEIVE AN INVOICE WITH ALL DETAILS.

PAYMENT OF ROOMS AT THE PARK INN BY RADISSON WILL BE HANDLED WITH THE HOTEL DIRECTLY.

DEADLINES:

REGISTRATION COUNTRIES WITH AN ESTIMATE OF PLAYERS & GUESTS NO LATER THAN	15TH JANUARY
REGISTRATION PLAYERS AND GUESTS NO LATER THAN	15TH FEBRUARY
REGISTRATION HOTELS NO LATER THAN	1ST MARCH
TRANSFER PAYMENTS NO LATER THAN	1ST MARCH
ARRIVAL AND DEPARTURE INFORMATION NO LATER THAN	1ST MAY

CANCELLATION POLICY ACCORDING TO THE ESBC RULES.

WE LOOK FORWARD TO WELCOMING YOU!

