

BZ 304



Oil Per Board: 40 uL Oil Pattern Distance: 39 Feet Volume Oil Total: 21.08 mL Total Boards Crossed: 527 Boards

Forward Oil Total: 12.44 mL Reverse Oil Total: 8.64 mL
 311 Boards 216 Boards

Notes

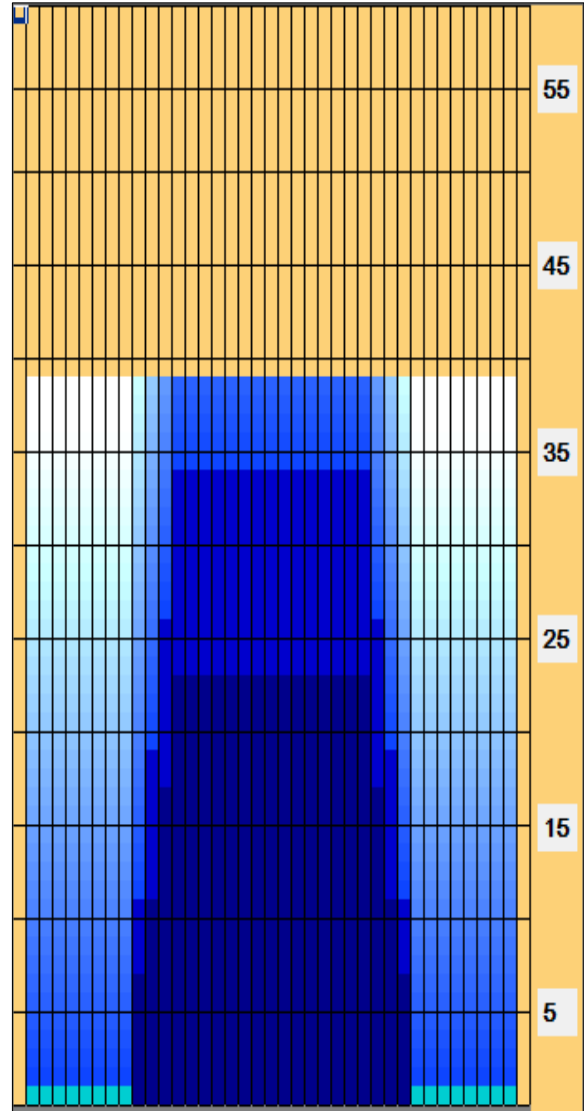
	Start	Stop	Loads	Speed	Crossed	Start	End	Feet	T.Oil
1	2L	2R	2	10	74	0.0	1.4	1.4	2960
2	10L	10R	4	10	84	1.4	7.0	5.6	3360
3	11L	11R	3	10	57	7.0	11.2	4.2	2280
4	12L	12R	3	14	51	11.2	17.1	5.9	2040
5	13L	13R	3	14	45	17.1	23.0	5.9	1800
6	2L	2R	0	22	0	23.0	34.0	11.0	0
7	2L	2R	0	30	0	34.0	39.0	5.0	0

	Start	Stop	Loads	Speed	Crossed	Start	End	Feet	T.Oil
1	2L	2R	0	26	0	39.0	34.0	-5.0	0
2	13L	13R	3	18	45	34.0	26.4	-7.6	1800
3	12L	12R	3	18	51	26.4	18.8	-7.6	2040
4	11L	11R	3	18	57	18.8	11.2	-7.6	2280
5	10L	10R	3	14	63	11.2	5.3	-5.9	2520
6	2L	2R	0	10	0	5.3	0.0	-5.3	0

Conditioner:
Type In or Select One

TransferType:
Type In or Select One

- Forward
- Reverse
- Combined
- Buff



Arrow Zone Ratios

Item	2-5L:16L-20	6-10L:16:-20	11-15L:16L-20	16L-20:20-16R	16L-20:20-16R	20-16R:15-11R	20-16R:10-6R	20-16R:5-2R
ul Arrow	80	136	936	1080	1080	936	136	80
Zone Ratio	13.5	7.94	1.15	1	1	1.15	7.94	13.5

Track Zone Ratios

Item	3L-7L:18L-18R	8L-12L:18L-18R	13L-17L:18L-18R	18L-18R:17R-13R	18L-18R:12R-8R	18L-18R:7R-3R
Description	Outside Track:Middle	Middle Track:Middle	Inside Track:Middle	Middle: Inside Track	Middle:Middle Track	Middle:Outside Track
Track Zone Ratio	13.5	2.76	1	1	2.76	13.5

