

36 stop Chomutov



Oil Per Board: 40 uL Oil Pattern Distance: 36 Feet Volume Oil Total: 22.76 mL Total Boards Crossed: 569 Boards

Forward Oil Total: 10.32 mL Reverse Oil Total: 12.44 mL
 Forward Boards Crossed: 258 Boards Reverse Boards Crossed: 311 Boards

| | Start | Stop | Loads | Speed | Crossed | Start | End | Feet | T.Oil |
|---|-------|------|-------|-------|---------|-------|------|------|-------|
| 1 | 2L | 2R | 2 | 10 | 74 | 0.0 | 1.4 | 1.4 | 2960 |
| 2 | 6L | 6R | 2 | 10 | 58 | 1.4 | 4.2 | 2.8 | 2320 |
| 3 | 9L | 9R | 3 | 10 | 69 | 4.2 | 8.4 | 4.2 | 2760 |
| 4 | 11L | 11R | 3 | 14 | 57 | 8.4 | 14.3 | 5.9 | 2280 |
| 5 | 2L | 2R | 0 | 18 | 0 | 14.3 | 24.0 | 9.7 | 0 |
| 6 | 2L | 2R | 0 | 22 | 0 | 24.0 | 33.0 | 9.0 | 0 |
| 7 | 2L | 2R | 0 | 10 | 0 | 33.0 | 36.0 | 3.0 | 0 |

Navigation: Forward Reverse More Info

| | Start | Stop | Loads | Speed | Crossed | Start | End | Feet | T.Oil |
|---|-------|------|-------|-------|---------|-------|------|------|-------|
| 1 | 2L | 2R | 0 | 30 | 0 | 36.0 | 34.0 | -2.0 | 0 |
| 2 | 13L | 13R | 2 | 18 | 30 | 34.0 | 28.9 | -5.1 | 1200 |
| 3 | 12L | 12R | 2 | 14 | 34 | 28.9 | 25.0 | -3.9 | 1360 |
| 4 | 11L | 11R | 2 | 14 | 38 | 25.0 | 21.1 | -3.9 | 1520 |
| 5 | 10L | 10R | 2 | 14 | 42 | 21.1 | 17.2 | -3.9 | 1680 |
| 6 | 9L | 9R | 4 | 10 | 92 | 17.2 | 11.6 | -5.6 | 3680 |
| 7 | 8L | 8R | 3 | 10 | 75 | 11.6 | 7.4 | -4.2 | 3000 |
| 8 | 2L | 2R | 0 | 10 | 0 | 7.4 | 0.0 | -7.4 | 0 |

Navigation: Forward Reverse More Info

Report Date

11/29/2011

Conditioner:

Type In or Select One

TransferType:

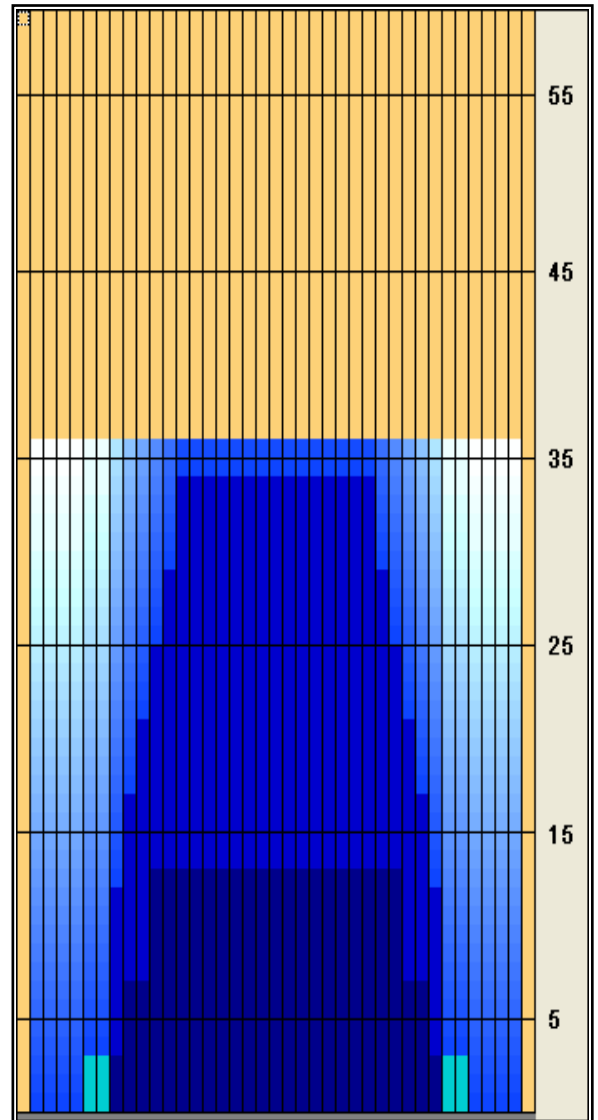
Type In or Select One

Forward Oil

Reverse Oil

Combined Oil

Buff Area



Arrow Zone Ratios

| Item | 2-6L:16L-20 | 6-10L:16-20 | 11-15L:16L-20 | 16L-20:20-16R | 16L-20:20-16R | 20-16R:15-11R | 20-16R:10-6R | 20-16R:5-2R |
|------------|-------------|-------------|---------------|---------------|---------------|---------------|--------------|-------------|
| ul Arrow | 80 | 360 | 952 | 1000 | 1000 | 952 | 360 | 80 |
| Zone Ratio | 12.5 | 2.78 | 1.05 | 1 | 1 | 1.05 | 2.78 | 12.5 |

Track Zone Ratios

| Item | 3L-7L:18L-18R | 8L-12L:18L-18R | 13L-17L:18L-18R | 18L-18R:17R-13R | 18L-18R:12R-8R | 18L-18R:7R-3R |
|------------------|----------------------|---------------------|---------------------|----------------------|---------------------|----------------------|
| Description | Outside Track:Middle | Middle Track:Middle | Inside Track:Middle | Middle: Inside Track | Middle:Middle Track | Middle:Outside Track |
| Track Zone Ratio | 8.93 | 1.54 | 1 | 1 | 1.54 | 8.93 |

