



BZ Sport 38

Oil Per Board: 40 uL Oil Pattern Distance: 38 Feet Volume Oil Total: 22.96 mL Total Boards Crossed: 574 Boards

Forward Oil Total: 12.44 mL
Forward Boards Crossed: 311 Boards

Reverse Oil Total: 10.52 mL
Reverse Boards Crossed: 263 Boards

Notes

	Start	Stop	Loads	Speed	Crossed	Start	End	Feet	T.Oil
1	2L	2R	5	10	185	0.0	5.6	5.6	7400
2	7L	8R	1	14	26	5.6	7.5	1.9	1040
3	8L	9R	1	14	24	7.5	9.4	1.9	960
4	9L	10R	1	14	22	9.4	11.3	1.9	880
5	10L	11R	1	14	20	11.3	13.2	1.9	800
6	11L	12R	1	18	18	13.2	15.7	2.5	720
7	12L	13R	1	18	16	15.7	18.2	2.5	640
8	2L	2R	0	30	0	18.2	38.0	19.8	0

	Start	Stop	Loads	Speed	Crossed	Start	End	Feet	T.Oil
1	2L	2R	0	26	0	38.0	31.0	-7.0	0
2	12L	13R	2	18	32	31.0	25.9	-5.1	1280
3	11L	12R	2	18	36	25.9	20.8	-5.1	1440
4	10L	11R	2	18	40	20.8	15.7	-5.1	1600
5	9L	10R	2	14	44	15.7	11.8	-3.9	1760
6	8L	9R	2	14	48	11.8	7.9	-3.9	1920
7	7L	8R	1	14	26	7.9	6.0	-1.9	1040
8	2L	2R	1	10	37	6.0	4.6	-1.4	1480
9	2L	2R	0	10	0	4.6	0.0	-4.6	0

Conditioner:
Type In or Select One

TransferType:
Type In or Select One

Forward



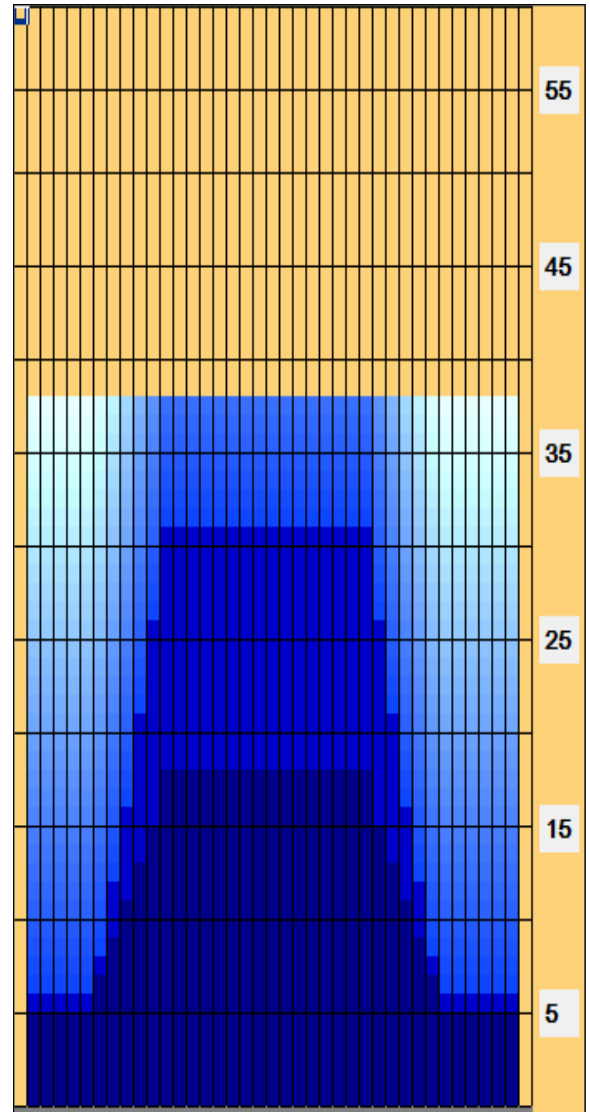
Reverse



Combined



Buff



Arrow Zone Ratios

Item	2-5L:16L-20	6-10L:16-20	11-15L:16L-20	16L-20:20-16R	16L-20:20-16R	20-16R:15-11R	20-16R:10-6R	20-16R:5-2R
ul Arrow	240	448	896	920	920	848	360	240
Zone Ratio	3.83	2.05	1.03	1	1	1.08	2.56	3.83

Track Zone Ratios

Item	3L-7L:18L-18R	8L-12L:18L-18R	13L-17L:18L-18R	18L-18R:17R-13R	18L-18R:12R-8R	18L-18R:7R-3R
Description	Outside Track:Middle	Middle Track:Middle	Inside Track:Middle	Middle: Inside Track	Middle:Middle Track	Middle:Outside Track
Track Zone Ratio	3.59	1.35	1	1	1.64	3.83

