

# ABT #2



<b>Oil Pattern Distance:</b>	<b>40 Feet</b>	<b>Reverse Brush Drop:</b>	<b>40 Feet</b>	<b>Oil Per Board:</b>	<b>50 uL</b>
<b>Forward Oil Total:</b>	<b>12.45 mL</b>	<b>Reverse Oil Total:</b>	<b>11.5 mL</b>	<b>Volume Oil Total:</b>	<b>23.95 mL</b>
<b>Forward Boards Crossed:</b>	<b>249 Boards</b>	<b>Reverse Boards Crossed:</b>	<b>230 Boards</b>	<b>Total Boards Crossed:</b>	<b>479 Boards</b>

	Start	Stop	Loads	Speed	Crossed	Start	End	Feet	T.Oil
1	2L	2R	2	18	74	0.0	2.5	2.5	3700
2	9L	9R	1	18	23	2.5	5.0	2.5	1150
3	10L	10R	2	18	42	5.0	10.1	5.1	2100
4	11L	11R	4	22	76	10.1	22.5	12.4	3800
5	12L	12R	2	22	34	22.5	28.7	6.2	1700
6	2L	2R	0	26	0	28.7	40.0	11.3	0

Conditioner:  
Type In or Select One

TransferType:  
Type In or Select One

Forward



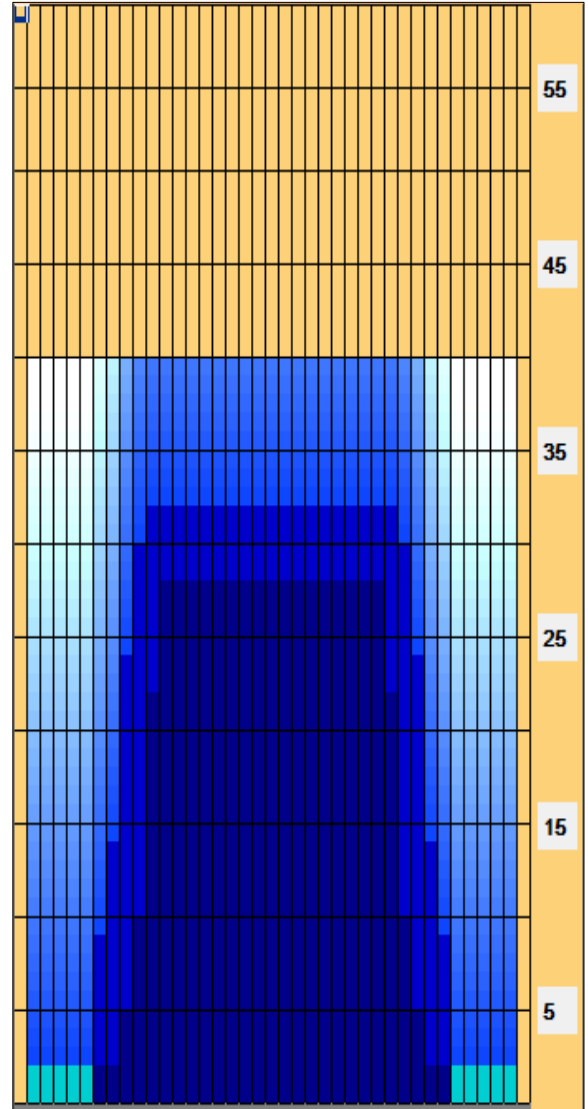
Reverse



Combined



Buff



Forward Reverse More

	Start	Stop	Loads	Speed	Crossed	Start	End	Feet	T.Oil
1	2L	2R	0	30	0	40.0	32.0	-8.0	0
2	11L	11R	1	18	19	32.0	29.5	-2.5	950
3	10L	10R	2	18	42	29.5	24.4	-5.1	2100
4	9L	9R	4	18	92	24.4	14.2	-10.2	4600
5	8L	8R	2	18	50	14.2	9.1	-5.1	2500
6	7L	7R	1	14	27	9.1	7.2	-1.9	1350
7	2L	2R	0	10	0	7.2	0.0	-7.2	0

Forward Reverse More

Item	3L-7L:18L-18R	8L-12L:18L-18R	13L-17L:18L-18R	18L-18R:17R-13R	18L-18R:12R-8R	18L-18R:7R-3R
Description	Outside Track:Middle	Middle Track:Middle	Inside Track:Middle	Middle:Inside Track	Middle:Middle Track	Middle:Outside Track
Track Zone Ratio	9.55	1.52	1	1	1.52	9.55

