

# ČSP 21.4.2018 Pardubice



Oil Per Board: 50 uL      Oil Pattern Distance: 38 Feet      Volume Oil Total: 23.35 mL      Total Boards Crossed: 467 Boards

Forward Oil Total: 13.7 mL      Reverse Oil Total: 9.65 mL

274 Boards      193 Boards

Notes

	Start	Stop	Loads	Speed	Crossed	Start	End	Feet	T.Oil
1	2L	2R	2	14	74	0.0	1.9	1.9	3700
2	9L	9R	3	14	69	1.9	7.8	5.9	3450
3	10L	10R	2	18	42	7.8	12.9	5.1	2100
4	11L	11R	2	18	38	12.9	18.0	5.1	1900
5	12L	12R	3	18	51	18.0	25.6	7.6	2550
6	2L	2R	0	18	0	25.6	34.0	8.4	0
7	2L	2R	0	10	0	34.0	38.0	4.0	0

	Start	Stop	Loads	Speed	Crossed	Start	End	Feet	T.Oil
1	2L	2R	0	30	0	38.0	33.0	-5.0	0
2	12L	12R	1	18	17	33.0	30.5	-2.5	850
3	11L	11R	2	18	38	30.5	25.4	-5.1	1900
4	10L	10R	2	18	42	25.4	20.3	-5.1	2100
5	9L	9R	2	18	46	20.3	15.2	-5.1	2300
6	8L	8R	2	14	50	15.2	11.3	-3.9	2500
7	2L	2R	0	10	0	11.3	0.0	-11.3	0

Conditioner:  
Type In or Select One

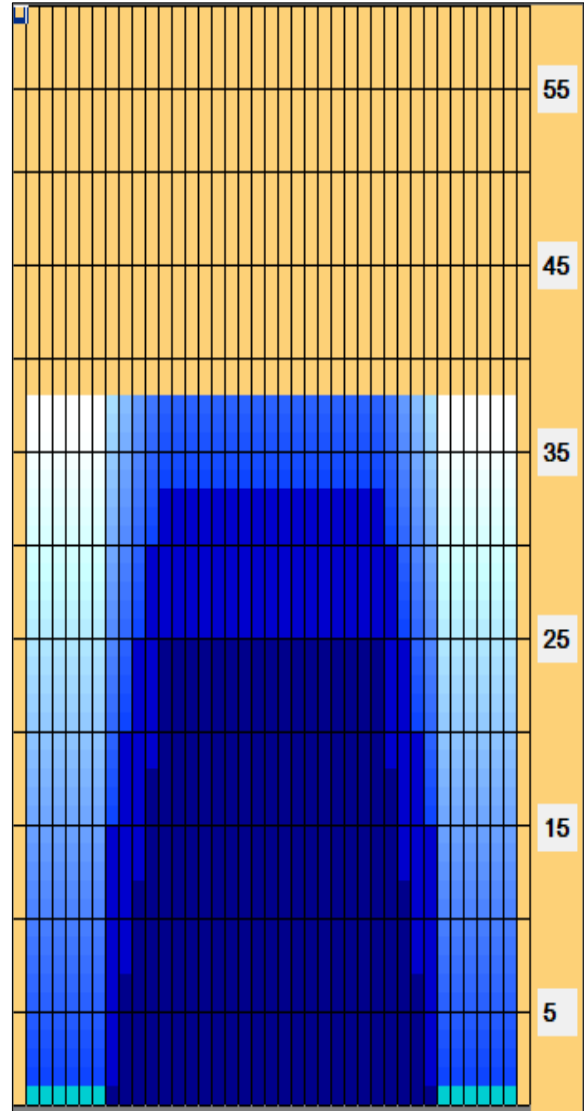
TransferType:  
Type In or Select One

Forward

Reverse

Combined

Buff



Arrow Zone Ratios

Item	2-5L:16L-20	6-10L:16:-20	11-15L:16L-20	16L-20:20-16R	16L-20:20-16R	20-16R:15-11R	20-16R:10-6R	20-16R:5-2R
ul Arrow	100	300	1010	1050	1050	1010	300	100
Zone Ratio	10.5	3.5	1.04	1	1	1.04	3.5	10.5

Track Zone Ratios

Item	3L-7L:18L-18R	8L-12L:18L-18R	13L-17L:18L-18R	18L-18R:17R-13R	18L-18R:12R-8R	18L-18R:7R-3R
Description	Outside Track:Middle	Middle Track:Middle	Inside Track:Middle	Middle: Inside Track	Middle:Middle Track	Middle:Outside Track
Track Zone Ratio	10.5	1.64	1	1	1.64	10.5

