

# Old School Bowling Cup 2015

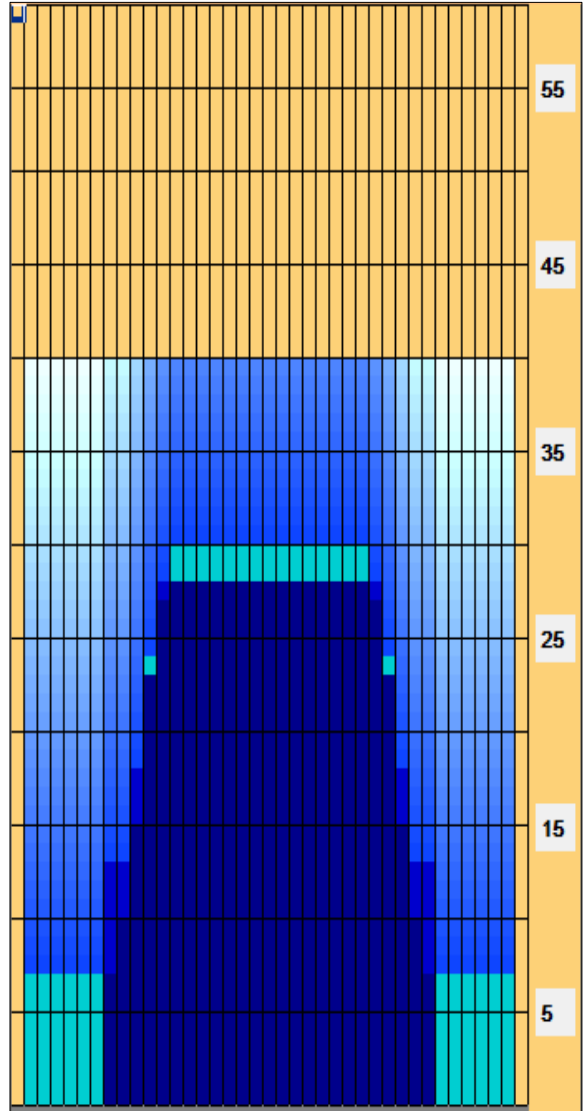


**Oil Pattern Distance:** 40 Feet      **Reverse Brush Drop:** 40 Feet      **Oil Per Board:** 40 uL  
**Forward Oil Total:** 12.08 mL      **Reverse Oil Total:** 6.56 mL      **Volume Oil Total:** 18.64 mL  
**Forward Boards Crossed:** 302 Boards      **Reverse Boards Crossed:** 164 Boards      **Total Boards Crossed:** 466 Boards

	Start	Stop	Loads	Speed	Crossed	Start	End	Feet	T.Oil
1	2L	2R	4	18	148	0.0	7.6	7.6	5920
2	9L	9R	1	18	23	7.6	10.1	2.5	920
3	10L	10R	2	18	42	10.1	15.2	5.1	1680
4	11L	11R	3	22	57	15.2	24.5	9.3	2280
5	12L	12R	1	22	17	24.5	27.6	3.1	680
6	13L	13R	1	22	15	27.6	30.7	3.1	600
7	2L	2R	0	22	0	30.7	40.0	9.3	0

Conditioner:  
 Type In or Select One  
 TransferType:  
 Type In or Select One

- Forward
- Reverse
- Combined
- Buff



Navigation: Forward Reverse More

	Start	Stop	Loads	Speed	Crossed	Start	End	Feet	T.Oil
1	2L	2R	0	26	0	40.0	28.0	-12.0	0
2	12L	12R	2	18	34	28.0	22.9	-5.1	1360
3	11L	11R	2	18	38	22.9	17.8	-5.1	1520
4	10L	10R	2	18	42	17.8	12.7	-5.1	1680
5	8L	8R	1	18	25	12.7	10.2	-2.5	1000
6	8L	8R	1	14	25	10.2	8.3	-1.9	1000
7	2L	2R	0	14	0	8.3	0.0	-8.3	0

Navigation: Forward Reverse More

Item	3L-7L:18L-18R	8L-12L:18L-18R	13L-17L:18L-18R	18L-18R:17R-13R	18L-18R:12R-8R	18L-18R:7R-3R
Description	Outside Track:Middle	Middle Track:Middle	Inside Track:Middle	Middle:Inside Track	Middle:Middle Track	Middle:Outside Track
Track Zone Ratio	5	1.69	1	1	1.69	5

